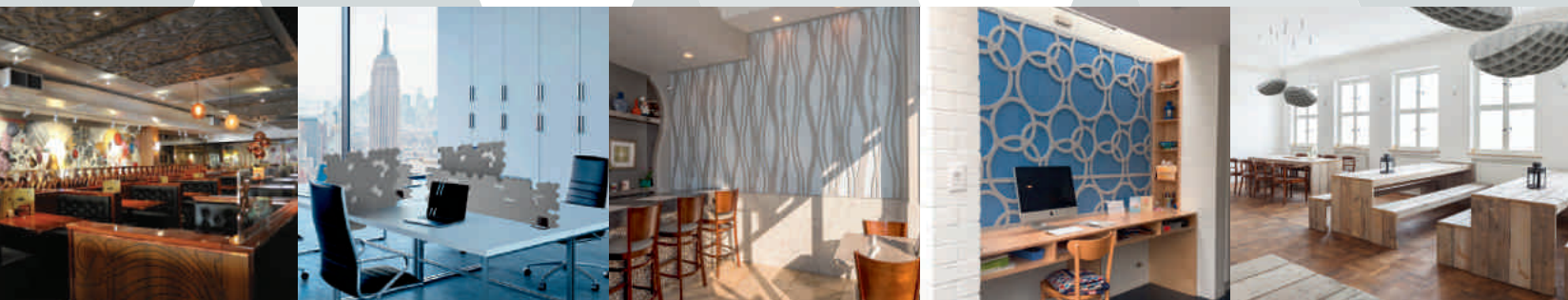
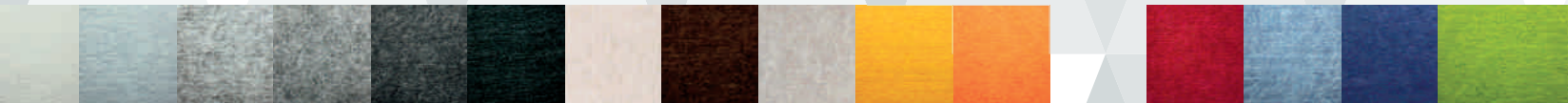
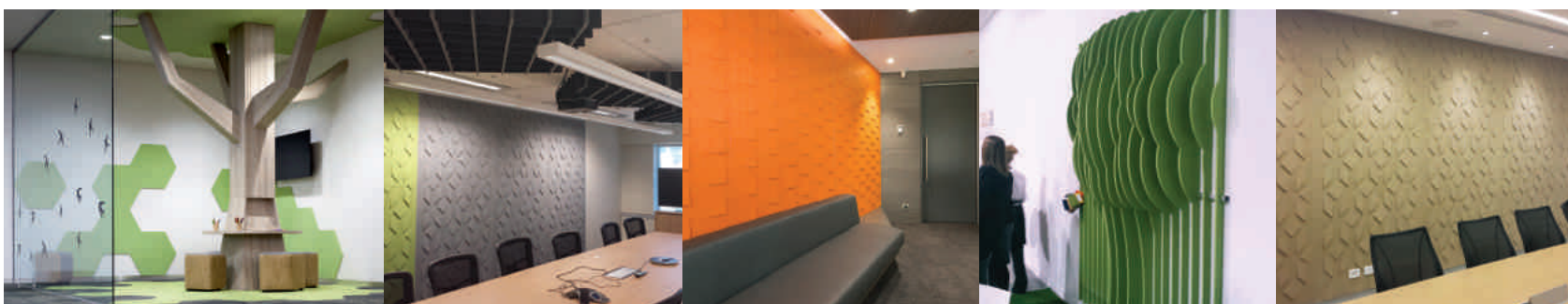


MDC



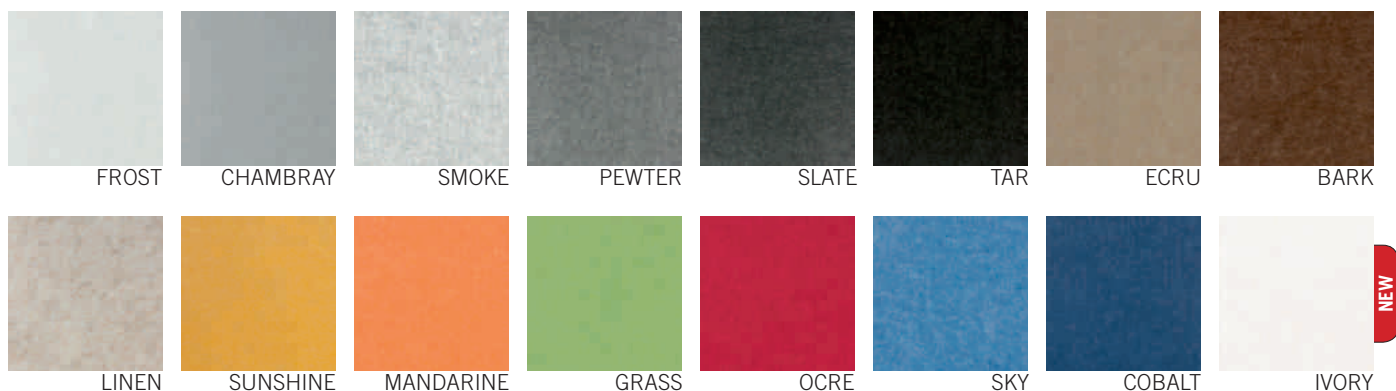
zintra[®]
ACOUSTIC SOLUTIONS

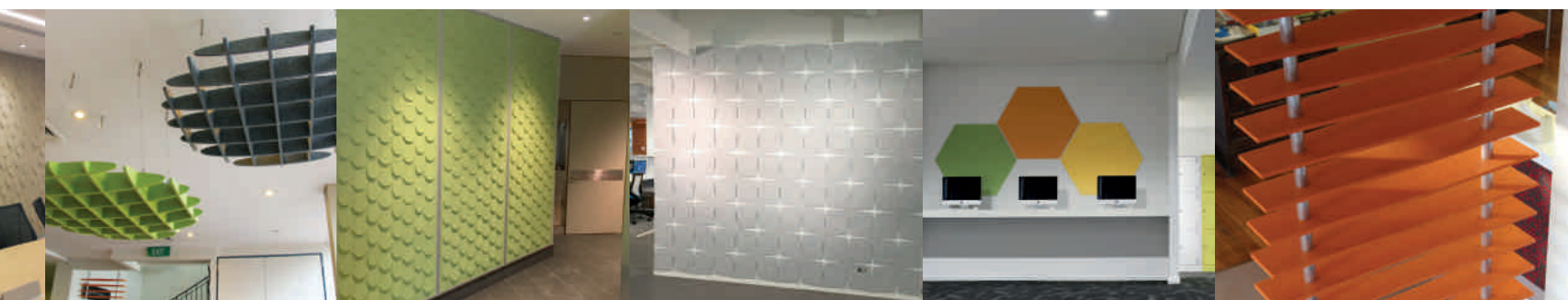


ZINTRA® ACOUSTIC SOLUTIONS

WHAT ARE ZINTRA® ACOUSTIC SOLUTIONS?

Zintra® Acoustic Solutions absorb internal and external sound influences reducing the noise level in a room. People feel more comfortable in the environment, being able to converse freely, experience better speech intelligibility and don't have to fight to be heard. Zintra® offers all of these benefits in a range of colors and applications, sure to enhance your space.





INDEX

Zintra® Acoustic 1/2" Panels	04
Zintra® Acoustic Digital Print	08
Zintra® Acoustic Textures	12
Zintra® Acoustic Patterns	18
Zintra® Sliding Screen System	26
Zintra® Acoustic Baffles	28
Zintra® Acoustic Clouds	34
Zintra® Suspended Panel System	38
Zintra® Acoustic Blades	40
Zintra® Acoustic Concertina	44
Zintra® Desk Solutions	48

ZINTRA[®] ACOUSTIC

1/2" PANELS



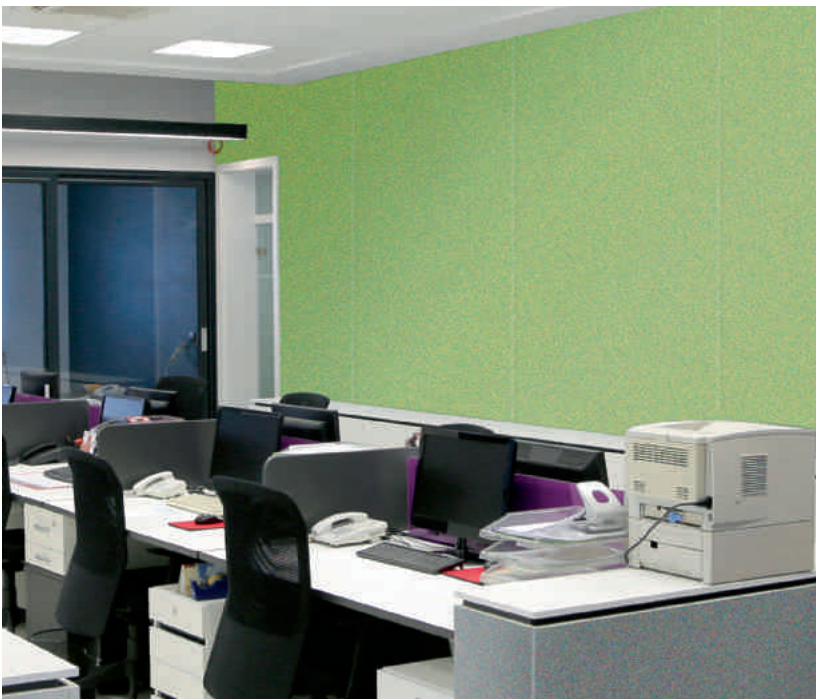
ZINTRA® ACOUSTIC 1/2" PANELS

WHAT ARE ZINTRA® ACOUSTIC 1/2" PANELS?

Zintra® Acoustic 1/2" Panels are the perfect solution for your application where sound reduction as well as aesthetics are required. Zintra's® wide range of colors and ease of use make it the ideal material for commercial, hospitality, educational and institutional projects.

ZINTRA® ACOUSTIC 1/2" PANELS FEATURES

- Cost effective sound absorbing solution ranging between 0.45-0.90 NRC
- 9' long panels ideal for joint-free floor to ceiling applications
- Broad range of neutral and bright colors
- Suitable for multiple applications – walls, ceilings, screens, partitions, millwork
- Easily fabricated and installed
- Color is uniform through entire thickness
- Tackable
- Digitally printable (see page 8)

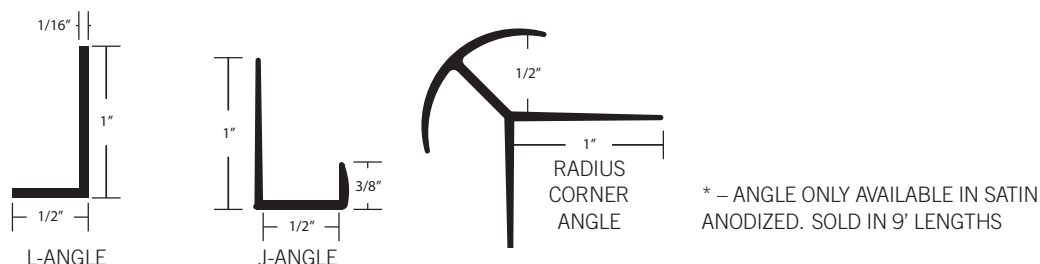


ZINTRA® ACOUSTIC 1/2" PANELS SPECIFICATIONS

zintra®

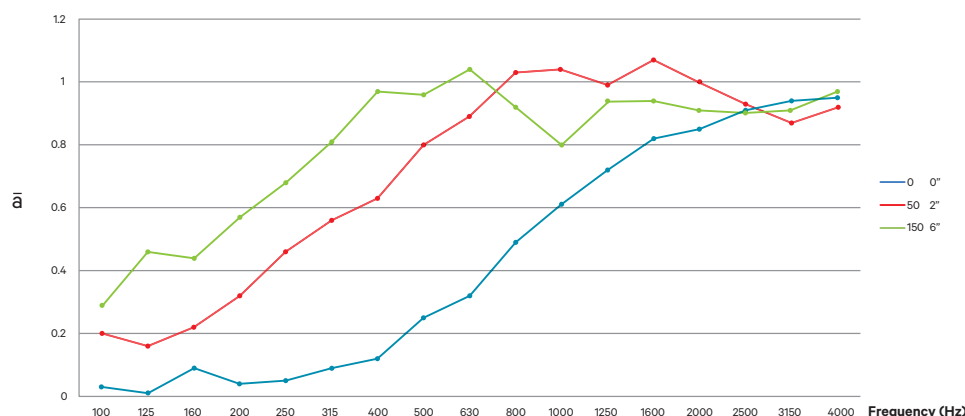
CONTENT	100% Polyester
ACOUSTIC RATING	0.45-0.90 NRC
PANEL SIZE / THICKNESS	4' x 9' x 1/2" / 1220mm x 2745mm x 12mm
SURFACE FINISH	Matte
WEIGHT	0.5 lb / ft² / 2.4 kg / m²
COLORS	16 standard colors. (See page 2)
APPLICATION	Indoor areas only.
FABRICATION	Utility knife, CNC with oscillating blade, jig saw, or table saw.
INSTALLATION	Adhere to substrate with silicon based construction adhesive. Attach with screws, Z-clips, nails, stand-offs, aluminum trim or millwork. See MDCWALL.COM/Zintra for complete installation instructions.
FIRE RATING	In accordance with ASTM-E84, Zintra® Acoustic 1/2" achieves a Class A Fire Rating.
COLORFASTNESS TO LIGHT	In accordance with AATCC 16.3 option 3 the color change at 20 AFU was 4.5
CARE INSTRUCTIONS	Vacuum to remove dust, remove spills immediately using a clean damp cloth or with soap and water. Carpet and fabric cleaners can be used – always test an inconspicuous area first. Stain repellant coating available for additional protection.

OPTIONAL TRIMS



NRC COMPARISON

Distance from Wall	Frequency/Hz	100	125	160	200	250	315	400	500	630	800	1000	1250	1600	2000	2500	3150	4000	ā	NRC
0mm / 0"		0.03	0.01	0.09	0.04	0.05	0.09	0.12	0.25	0.32	0.49	0.61	0.72	0.82	0.85	0.91	0.94	0.95	0.44	0.45
50mm / 2"		0.20	0.16	0.22	0.32	0.46	0.56	0.63	0.80	0.89	1.03	1.04	0.99	1.07	1.00	0.93	0.87	0.92	0.81	0.80
150mm / 6"		0.29	0.46	0.44	0.57	0.68	0.81	0.97	0.96	0.91	1.04	0.92	0.80	0.94	0.94	0.91	0.90	0.91	0.97	0.90



MDC
MDCWALL.COM

A high-angle photograph of a modern office workspace. A long, light-colored wooden desk is the central focus. A black ergonomic office chair is positioned in the foreground. A colorful, geometric patterned acoustic divider separates the workspace. On the desk, there is a silver laptop, a silver desk lamp, a blue book, a small blue cup of coffee, a silver container, a white card holder, and a blue smartphone. The floor is made of large, light-colored stone tiles. In the background, there are more potted plants and a small bicycle.

ZINTRA® ACOUSTIC DIGITAL PRINT

ZINTRA[®] ACOUSTIC DIGITAL PRINT

WHAT IS ZINTRA[®] ACOUSTIC DIGITAL PRINT?

Zintrac[®] Acoustic Digital Print combines the performance of a cost effective, sound absorbing solution with digital printing to create a graphic of your choice. Zintrac[®] Acoustic ½" can be digitally printed to provide that extra creative element to your project.

ZINTRA[®] ACOUSTIC DIGITAL PRINT

- Cost effective sound solution with unlimited design flexibility
- Suitable for a multitude of applications – walls, ceilings, space division, signage and set in millwork
- Ideal for reinforcing branding and corporate identity
- Easily fabricated and installed
- Tackable



ZINTRA® ACOUSTIC DIGITAL PRINT SPECIFICATIONS

CONTENT	100% Polyester
ACOUSTIC RATING	½" - 0.45-0.90 NRC
SIZE / THICKNESS	½" - 4' x 9' x ½" / 1220mm x 2745mm x 12mm
SURFACE FINISH	Matte
DIGITAL IMAGING	Zindra is inkjet printed with UV Water Based Ink containing ZERO VOC's and no heavy metals. UV inks used are Swan and Green Guard certified.
APPLICATION	Indoor areas only.
FABRICATION	Utility knife, CNC with oscillating blade, jig saw, or table saw.
INSTALLATION	See Installation Instructions at MDCWALL.COM/Zindra for Zindra® Acoustic ½" Panels
FIRE RATING	In accordance with ASTM-E84, Zindra® Acoustic ½" achieves a Class A Fire Rating.
CARE INSTRUCTIONS	Vacuum to remove dust Remove spills immediately using a clean damp cloth or with soap and water. Carpet and fabric cleaners can be used – always test an inconspicuous area first. Stain repellant coating available for additional protection.



ZINTRA[®] ACOUSTIC TEXTURES

ZINTRA® ACOUSTIC TEXTURES

WHAT ARE ZINTRA® ACOUSTIC TEXTURE PANELS?

Zindra® Acoustic Textures subtle three-dimensional relief creates dimension and acoustic refraction within your space, making them ideal for noisy, public spaces where good acoustic quality and aesthetics are required. Our wide range of designs and colors work easily in classic or modern settings.

ZINTRA® ACOUSTIC TEXTURE PANELS FEATURES

- Uniquely designed sound solution - 0.45 NRC
- Provides sound absorption as well as sound diffraction
- 9' long panels ideal for joint-free floor to ceiling applications
- 12 standard designs - see following page
- Easily installed



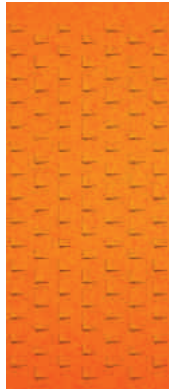
CERCLE
IN GRASS



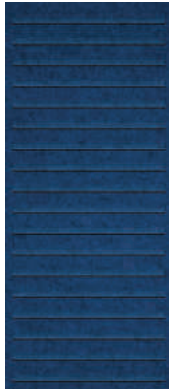
CARRE
IN OCRE



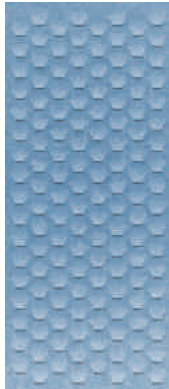
CORBE
IN ECRU



DIAMONT
IN MANDARINE



DROIT
IN COBALT



HEXAGONE
IN SKY



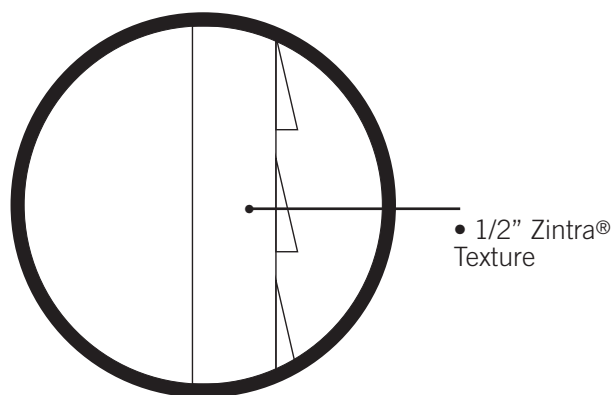
TESSAN
IN SMOKE



VAGUE
IN SUNSHINE

ZINTRA[®] ACOUSTIC TEXTURES SPECIFICATIONS

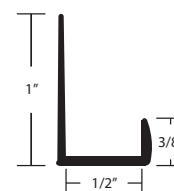
CONTENT	100% Polyester
ACOUSTIC RATING	0.45 NRC
PANEL SIZE / THICKNESS	4' x 9' x ½" / 1220mm x 2745mm x 12mm
SURFACE FINISH	Matte
WEIGHT	0.5 lbs / ft ² / 2.4 kg / m ²
COLORS	16 standard colors. (See page 2)
APPLICATION	Indoor areas only.
FABRICATION	Utility knife, CNC with oscillating blade, jig saw, or table saw. To be used for cutting around obstacles only. Panel sizing should be handled by the production facility.
INSTALLATION	Adhere directly to substrate with recommended construction adhesive. See MDCWALL.COM/Zintra for complete installation instructions. Available with MDF backer for an additional charge
FIRE RATING	In accordance with ASTM-E84, Zintra [®] Acoustic ½" achieves a Class A Fire Rating.
CARE INSTRUCTIONS	Vacuum to remove dust Remove spills immediately using a clean damp cloth or with soap and water. Carpet and fabric cleaners can be used – always test an inconspicuous area first. Stain repellant coating available for additional protection.



OPTIONAL TRIM
L-ANGLE



J-ANGLE



* – ANGLE ONLY AVAILABLE IN SATIN ANODIZED. SOLD IN 9' LENGTHS



TISSAGE
IN SLATE



TRAPPE
IN COBALT



ETOLIE
IN FROST



SIGNE
IN BARK



zintrai®

DATA POINT

MDC
MDCWALL.COM

A photograph of an office interior. The background wall is bright red and covered with a pattern of black, three-dimensional acoustic panels. These panels have various geometric shapes, including hexagons and irregular polygons, some of which are interconnected. In the foreground, there are white office desks and blue ergonomic chairs. A computer monitor is visible on one of the desks. The floor is covered with blue carpeting. The ceiling is white with a grid pattern.

ZINTRA[®] ACOUSTIC PATTERNS

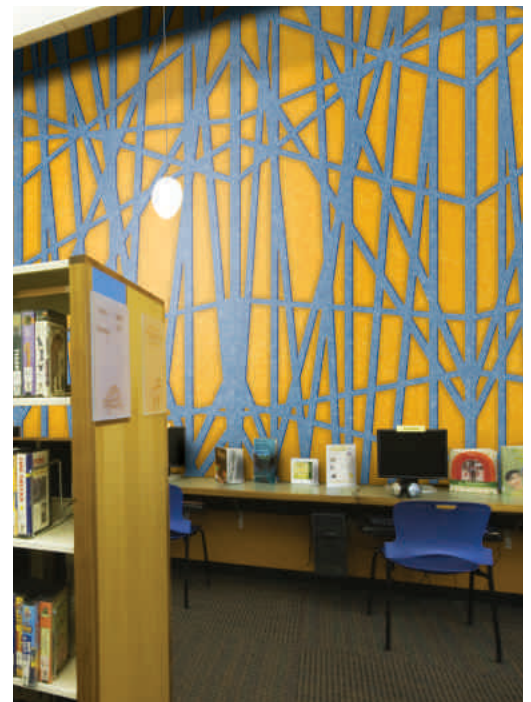
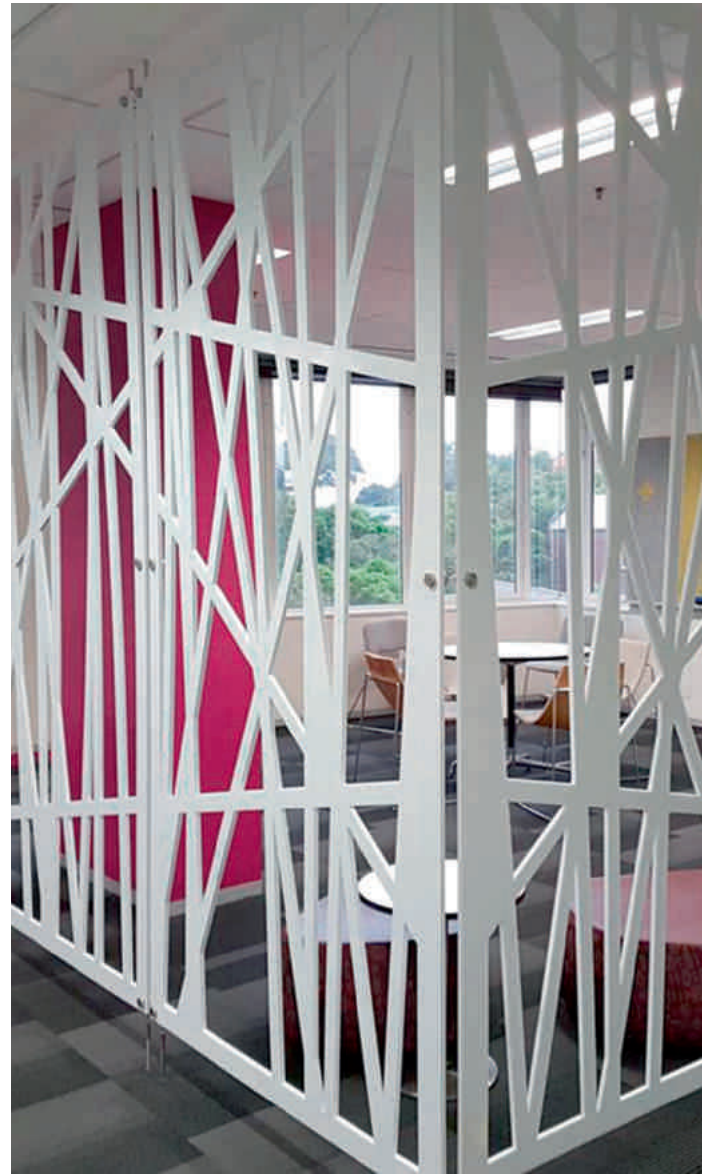
ZINTRA® ACOUSTIC PATTERNS

WHAT ARE ZINTRA® ACOUSTIC PATTERNS?

Experience our range of classic to contemporary design patterns cut out of Zintra®. Whether it is the Zintra® pattern layer only or the Zintra® pattern on a matching or contrasting solid Zintra® Panel as the backer, it will create a unique look for walls, or dividers, or ceilings. In just the one product you will find style, texture, contrast and depth with the added benefit of sound absorption and sound refraction to create a harmonious environment. The two layers of Zintra® Acoustic Patterns also increases the NRC value.

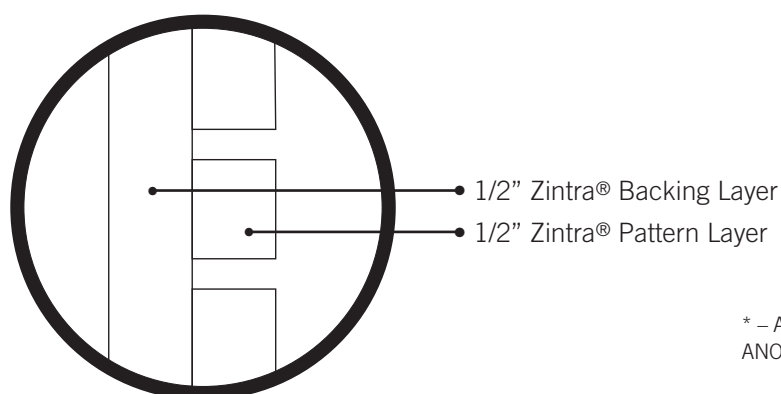
ZINTRA® ACOUSTIC PATTERNS FEATURES

- NRC = 0.45 - 0.95 depending on design and installation method
- Use as pattern layer only or the pattern layer with Zintra® Acoustic ½" backing
- Easy installation using Z-clips, adhesive or other mechanical mounting methods
- Tone-on-tone or two tone color combinations
- Ability to easily customize design for specific project requirements
- Apply directly to walls or ceilings or use as room dividers



ZINTRA® ACOUSTIC PATTERNS SPECIFICATIONS

CONTENT	100% Polyester
ACOUSTIC RATING	0.45-0.95 NRC
PANEL SIZE / THICKNESS	2' x 2' x 1" panels / 610mm x 610mm x 24mm 2' x 4' x 1" panels / 610mm x 1220mm x 24mm 4' x 9' x 1" panels / 1220mm x 2745mm x 24mm Pattern Only is ½" (12 mm) thick
SURFACE FINISH	Matte
WEIGHT	0.5 - 1 lb / ft² / 2.4 - 4.8 kg / m² depending on design
COLORS	16 standard colors. (See page 2)
APPLICATION	Indoor areas only. Utility knife, CNC with oscillating blade, jig saw, or table saw. To be used for cutting around obstacles only. Panel sizing should be handled by the production facility.
FABRICATION	Adhere to substrate with silicon based construction adhesive.
INSTALLATION	Attach with screws, nails, stand-offs, or aluminum trim. See MDCWALL.COM/Zintra for complete installation instructions.
FIRE RATING	In accordance with ASTM-E84, Zintra® Acoustic ½" and Zintra Pattern on Zintra achieves a Class A Fire Rating.
CARE INSTRUCTIONS	Vacuum to remove dust Remove spills immediately using a clean damp cloth or with soap and water. Carpet and fabric cleaners can be used – always test an inconspicuous area first. Stain repellant coating available for additional protection.



OPTIONAL TRIM
L-ANGLE

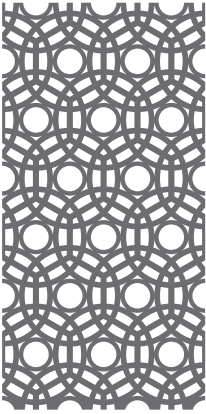


* – ANGLE ONLY AVAILABLE IN SATIN ANODIZED. SOLD IN 9' LENGTHS

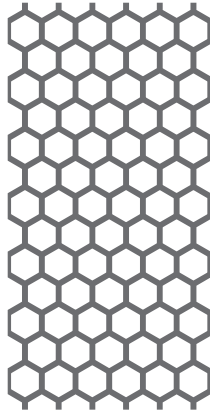


zintrac

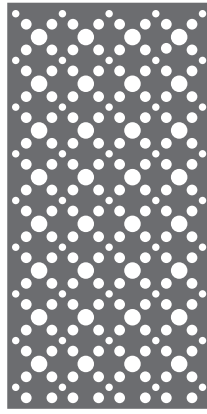
MDC
MDCWALL.COM



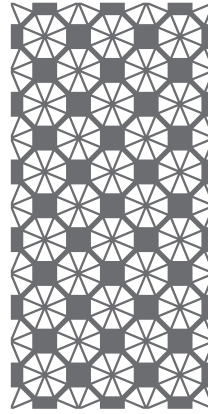
ABHAYA



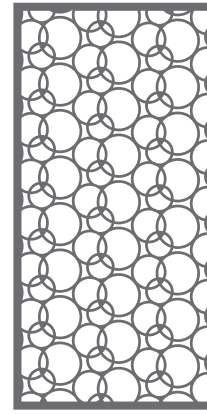
ASIATIC



ASTRA



BENGAL

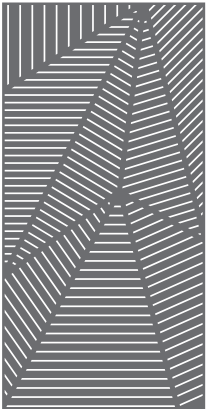


BHARATA

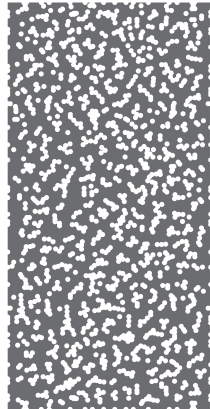


MALINI

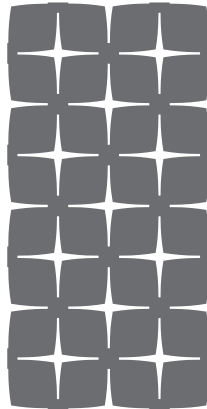
ZINTRA® ACOUSTIC PATTERNS



BHUSHAN



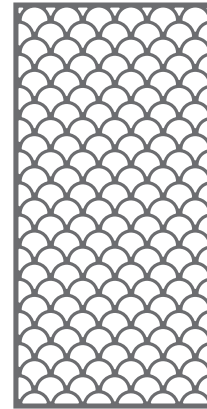
DEEPAK



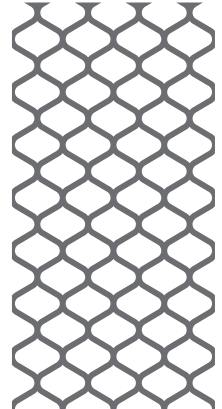
DEVRAJ



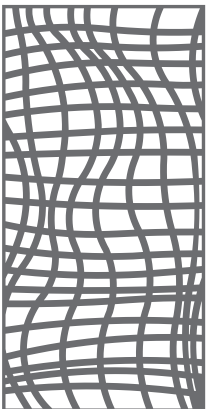
ELEPHANTA



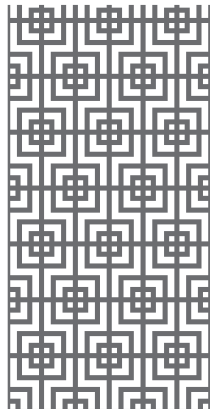
GADIVA



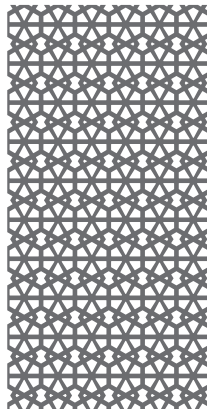
RAJA



HAIMATI



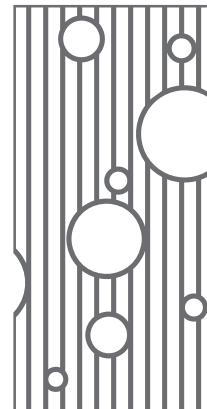
INDUS



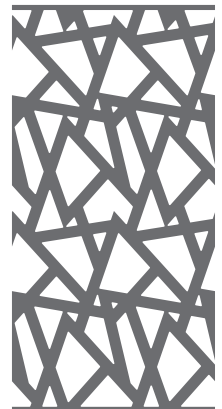
KALI



KERALA



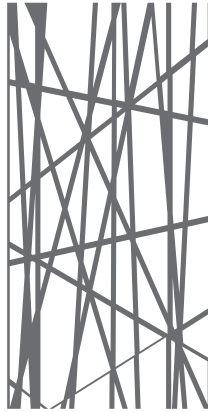
KRISHNAN



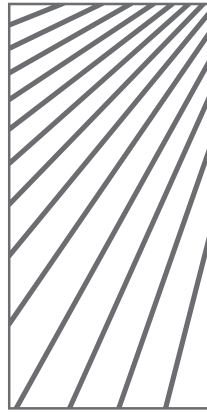
TELUGU



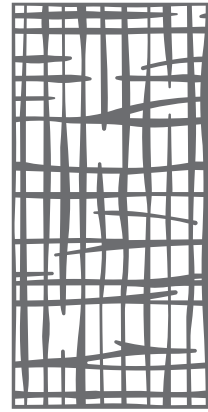
MANDAVA



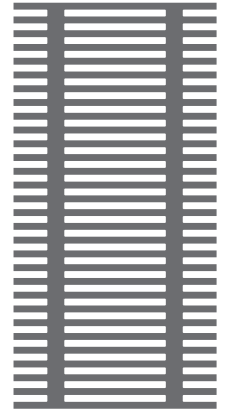
MONSOON



NADU



PADMESH

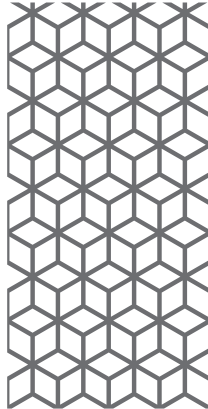


SAKRA

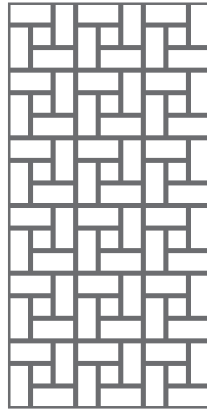
ZINTRAC[®] ACOUSTIC PATTERNS



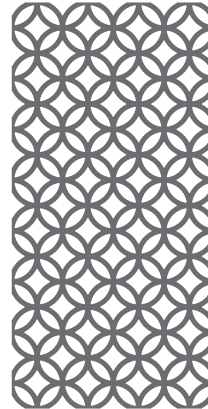
SANKARAN



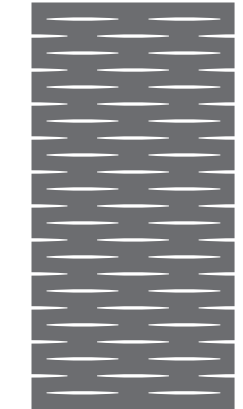
SANSKRIT



SUTRA



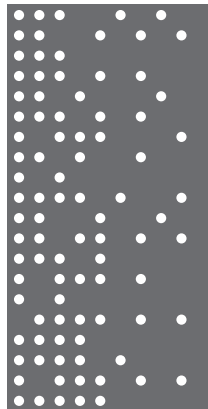
VEDIC



WAMIKA



PROSE



PUNTO



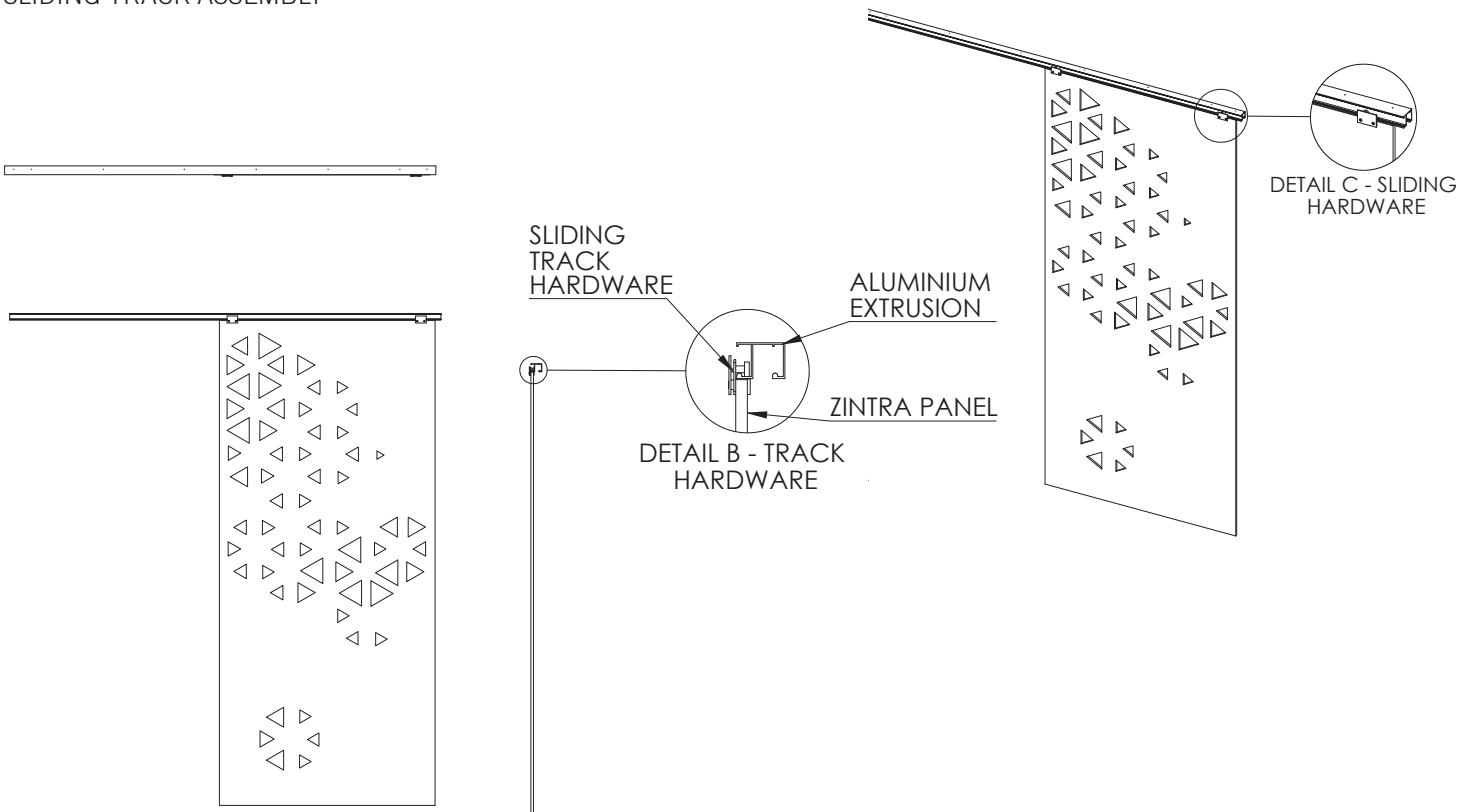
SIPTICAL



HEX



SLIDING TRACK ASSEMBLY



ZINTRÄ® ACOUSTIC SLIDING PANEL SPECIFICATIONS

CONTENT	100% Polyester
ACOUSTIC RATING	0.45-0.95 NRC
PANEL SIZE / THICKNESS	½" (12 mm) or 1" (24 mm) thick
SURFACE FINISH	Matte
WEIGHT	0.5 - 1 lb / ft² / 2.4 - 4.8 kg / m² depending on design
COLORS	16 standard colors. (See page 2)
APPLICATION	Indoor areas only
FABRICATION	Use a utility knife or CNC with oscillating blade for Zintra and standard woodworking tools for aluminum track. Sliding Track comes complete with assembly hardware.
PACKAGE INCLUDES	ZINTRÄ® with sliding track hardware already assembled Satin anodized aluminum track 8 x Flat head screws suitable for wooden substrate 4 x panel stoppers 2 x end caps
INSTALLATION	Drill M8 holes in aluminum track Screw aluminum track to wall/ceiling Place Zintra® Panels into the sliding track Attach panel stoppers (if required) insert end caps See MDCWALL.COM/Zintra for complete installation instructions.
FIRE RATING	In accordance with ASTM-E84, Zintra® Acoustic ½" and Zintra Pattern on Zintra achieves a Class A Fire Rating.
CARE INSTRUCTIONS	Vacuum to remove dust Remove spills immediately using a clean damp cloth or with soap and water. Carpet and fabric cleaners can be used – always test an inconspicuous area first. Stain repellent coating available for additional protection.



ZINTRA[®] ACOUSTIC BAFFLES

ZINTRAC[®] ACOUSTIC BAFFLES

WHAT ARE ZINTRAC[®] ACOUSTIC BAFFLES?

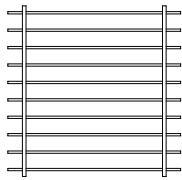
The Zintrac[®] Acoustic Baffle Systems are an easy to install replacement to standard ceiling tile systems. Zintrac[®] Acoustic Baffles are an aesthetically pleasing and high performance ceiling solution that provides exceptional noise reduction. Zintrac[®] Acoustic Baffles are ideally suited for large noisy spaces in education, institutional, retail, restaurants and airport projects.

ZINTRAC[®] BAFFLES FEATURES

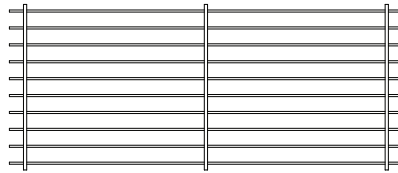
- Comes complete with hardware to install Zintrac[®] Acoustic ½" Baffles
- NRC = 0.90
- Customizable size, Baffle spacing and Baffle depth
- Creates a unique texture and aesthetic for ceilings
- Create custom designs and shapes
- Flat packed for cost effective transport



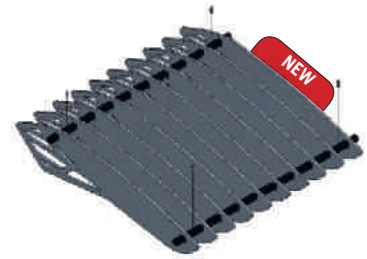
STANDARD BAFFLE SYSTEM OPTIONS:



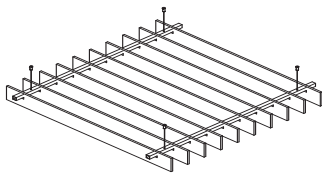
BAFFLES 4'x4' - PLAN VIEW



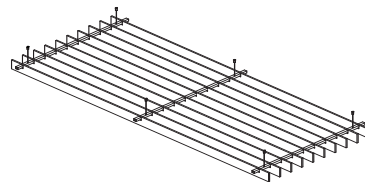
BAFFLE 4'x9' - PLAN VIEW



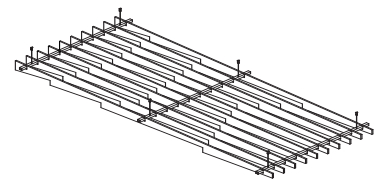
GORGE BAFFLE SYSTEM



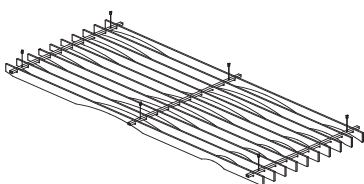
BAFFLES - SQUARE



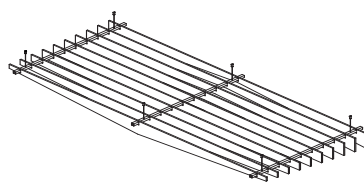
BAFFLES - STANDARD



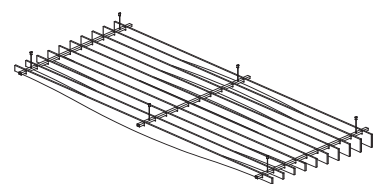
BAFFLES - BOLT



BAFFLES - CANYONS



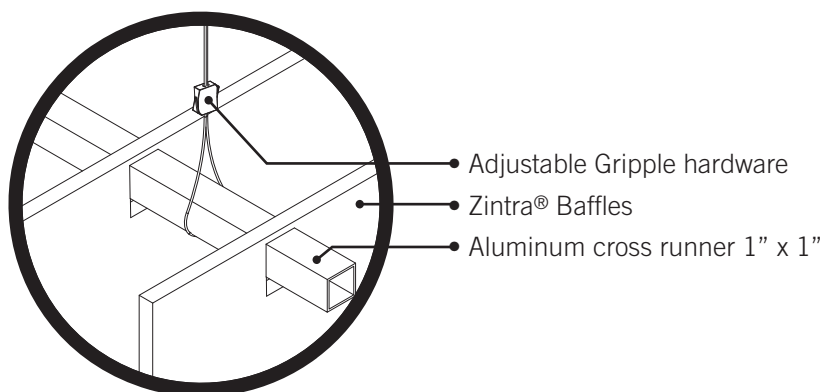
BAFFLES - RIDGES



BAFFLES - SWELL

ZINTRA® ACOUSTIC BAFFLES SYSTEM SPECIFICATIONS

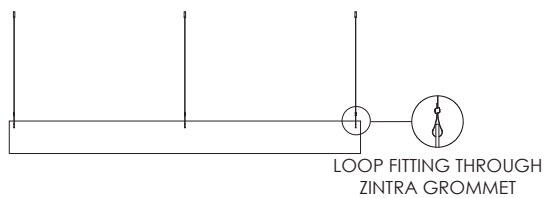
CONTENT	100% Polyester
ACOUSTIC RATING	0.90 NRC
BAFFLE DEPTH	5 ½" / 140mm or 10" / 254mm, Gorge Depth 12" / 305mm or 18" / 457mm
STANDARD SIZE	4' x 4' / 1220mm x 1220mm & 4' x 9' / 1220mm x 2745mm Gorge 4' x 4' / 1220mm x 1220mm & 4' x 6' / 1220mm x 1830mm
SPACING OPTIONS:	4.7", 8", or 12" Spacing on center
PACKAGE INCLUDES	Notched aluminum frame cross runners. Aluminum frame connectors & end caps. Complete hanging hardware including 5' / 1525mm of aircraft wire and adjustable fastener. Other lengths of aircraft wire are available for an additional charge. See Clouds Specifications for detail.
HARDWARE COLORS	Frame - Clear Satin Aluminum or Black. End-caps - Black or White
BAFFLE COLORS	16 standard colors. (See page 2)
BAFFLE THICKNESS	½" / 12mm (1" thick option available)
INSTALLATION	Install pre-cut Zintra® Acoustic ½" lengths on to frame. Install frame direct to ceiling substrate or hang via aircraft wire (provided). See MDCWALL.COM/Zintra for complete installation instructions.
FIRE RATING	In accordance with ASTM-E84, Zintra® Acoustic ½" Panels achieve a Class A Fire Rating.
CARE INSTRUCTIONS	Vacuum to remove dust Remove spills immediately using a clean damp cloth or with soap and water. Carpet and fabric cleaners can be used – always test an inconspicuous area first. Stain repellant coating available for additional protection.



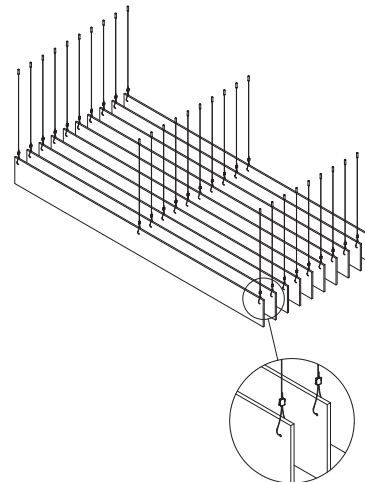
DETAIL A - LOOP GRIPPLE HANGER



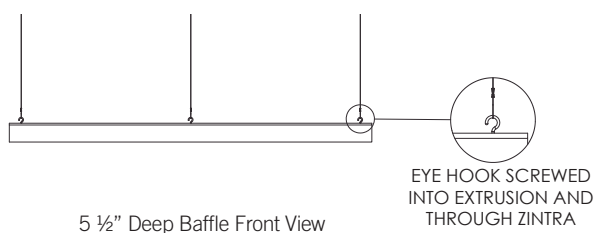
GROMMET BAFFLE SYSTEMS ASSEMBLY



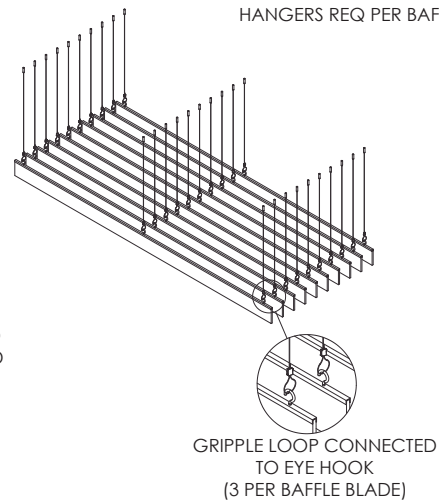
10" Deep Baffle Front View



HOOK BAFFLE SYSTEM ASSEMBLY



5 1/2" Deep Baffle Front View



ZINTRA[®] ACOUSTIC INDIVIDUAL BAFFLES SPECIFICATIONS

CONTENT	100% Polyester
ACOUSTIC RATING	0.90 NRC
BAFFLE DEPTH	12" / 305mm, Gorge Depth 12" / 305mm or 18" / 457mm
STANDARD SIZE	4' / 1220mm & 9' / 2745mm
PACKAGE INCLUDES	Zintra fabricated to size with either grommets or hooks/extrusion.
HARDWARE COLORS	Grommets – Silver or Brass. Extrusion – Black or White. Hooks – Black or White.
BAFFLE COLORS	16 standard Baffle colors (See page 2).
BAFFLE THICKNESS	½" / 12mm (1" thick option available)
INSTALLATION	Install hanger hardware to ceiling substrate. Hang Zintra Baffles from aircraft wire.
FIRE RATING	In accordance with ASTM-E84, Zintra [®] Acoustic ½" Panels achieve a Class A Fire Rating.
CARE INSTRUCTIONS	Vacuum to remove dust Remove spills immediately using a clean damp cloth or with soap and water. Carpet and fabric cleaners can be used – always test an inconspicuous area first. Stain repellant coating available for additional protection.

A wide-angle photograph of a modern office lobby. The ceiling is white and features several large, oval-shaped acoustic clouds in grey and green. The floor is made of large, light-colored tiles. In the background, there is a reception desk with a white and wood finish, and a seating area with grey sofas and potted plants. A glass-walled staircase is visible on the right side of the image.

ZINTRA[®] ACOUSTIC CLOUDS

ZINTRAC[®] ACOUSTIC CLOUDS

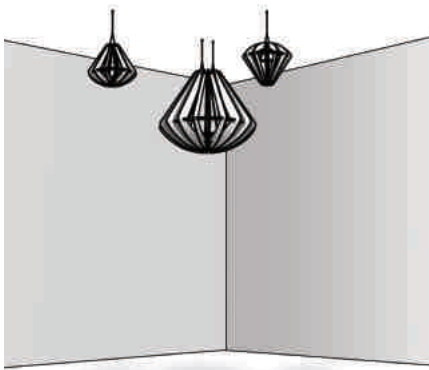
WHAT ARE ZINTRAC[®] ACOUSTIC CLOUDS?

Reduce the irritating reverberation of sound with Zintrac[®] Acoustic Clouds. These pre-fabricated Zintrac[®] Acoustic ½" pieces are quickly and easily assembled on-site, then the shape is suspended from the ceiling substrate. Zintrac[®] Acoustic Clouds provide attention grabbing three-dimensional texture that is easily installed, as well as the practical benefit of effective noise reduction.

ZINTRAC[®] CLOUDS FEATURES

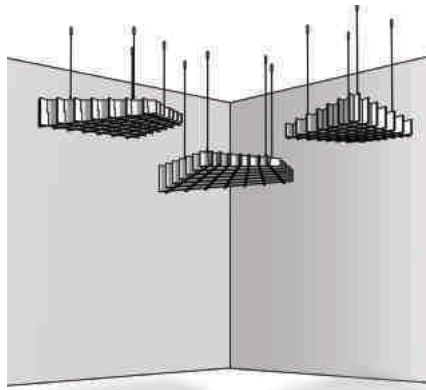
- Cost effective, easy to assemble solution
- NRC = 0.90
- Customizable in size
- Unique visual ceiling element
- Comes complete with hanging cables
- Flat packed for cost effective transport

STANDARD CLOUD CONFIGURATIONS:



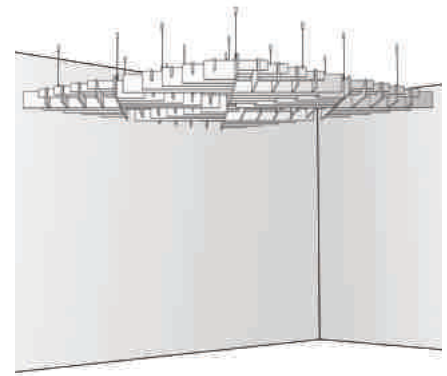
CLOUDS BLANCHARD

47"H x 56"DIA / 1195mm H x 1422mm DIA
23"H x 26"DIA / 584mm H x 356mm DIA



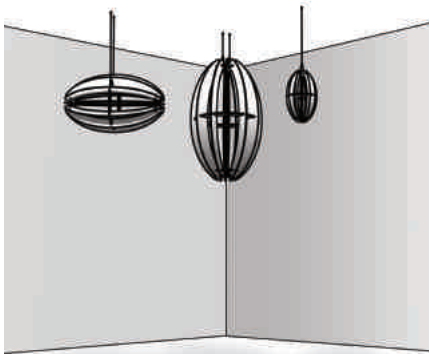
CLOUDS CLOCHETTE

44" x 40" x 9" / 1120mm x 1020mm x 230mmH



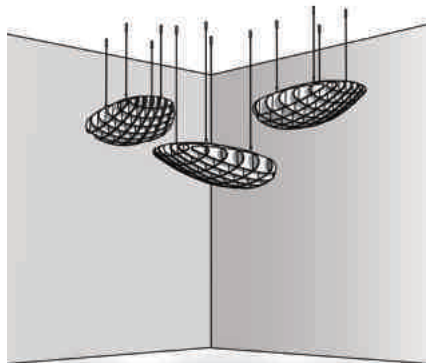
CLOUDS DRANTE*

48" x 48" x 5.5" / 1220mm x 1220mm x 140mmH
Largest size possible 6' x 6' / 1830mm x 1830mm



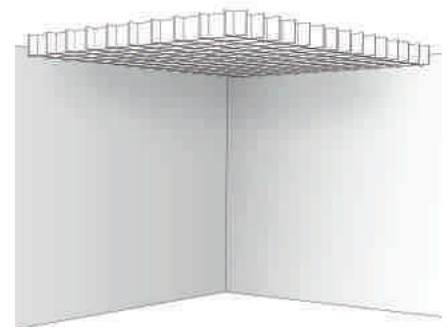
CLOUDS GIFFARD

71"H x 42"DIA / 1803mm H x 1066mm DIA
47"H x 27"DIA / 1193mm H x 685mm DIA
23"H x 14"DIA / 584mm H x 356mm DIA



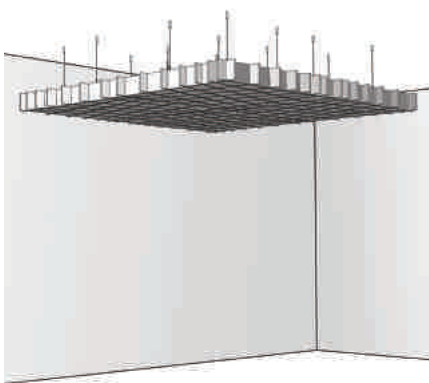
CLOUDS STRATUS

55" x 28" x 12" / 1400mm x 700mm x 292mmH



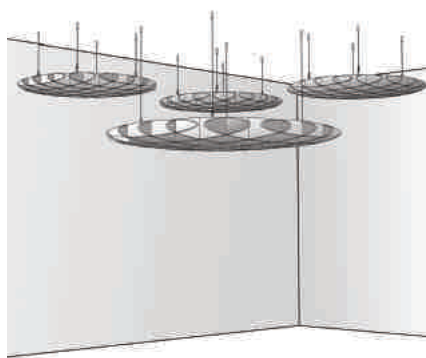
CLOUDS SQUARE*

48" x 48" x 5.5" / 1220mm x 1220mm x 140mmH
Largest size possible 9' x 9' / 2750mm x 2750mm



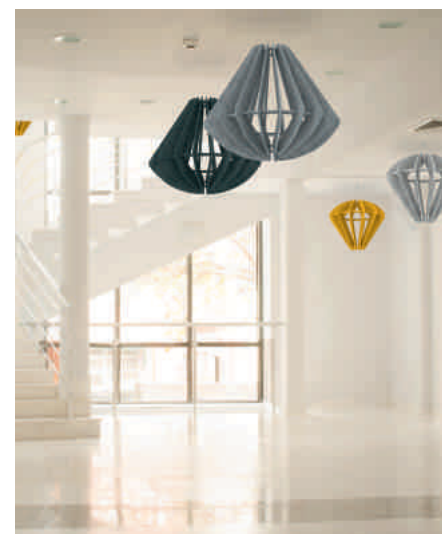
CLOUDS WARP*

48" x 48" x 5.5" / 1220mm x 1220mm x 140mmH
Largest size possible 9' x 9' / 2750mm x 2750mm



CLOUDS YOOFOE

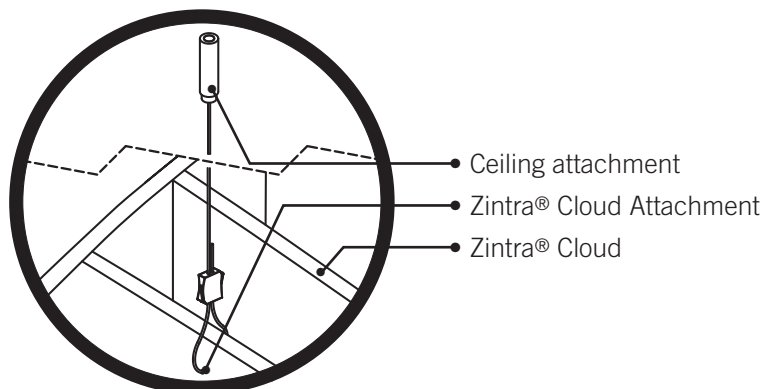
48" dia x 6.2" / 1220mm dia x 157mmH
Largest size possible 9' dia / 2750mm dia



* Drawing shows 4 sets of Clouds

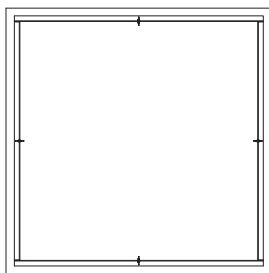
ZINTRA® ACOUSTIC CLOUDS SPECIFICATIONS

CONTENT	100% Polyester
ACOUSTIC RATING	0.90 NRC
COLOR	16 standard colors. (See page 2)
PACKAGE INCLUDES	Complete hanging hardware including 5' 1525 mm of aircraft wire and adjustable fasteners. Other lengths of aircraft wire are available for an additional charge.
INSTALLATION	Assemble clouds as per instructions. Fix hardware (supplied) to ceiling, feed wire through Zintra Cloud pre-drilled holes, and adjust height accordingly.
FIRE RATING	See MDCWALL.COM/Zintra for complete installation instructions.
CARE INSTRUCTIONS	In accordance with ASTM-E84, Zintra® Acoustic ½" achieves a Class A Fire Rating. Vacuum to remove dust Remove spills immediately using a clean damp cloth or with soap and water. Carpet and fabric cleaners can be used – always test an inconspicuous area first. Stain repellant coating available for additional protection.

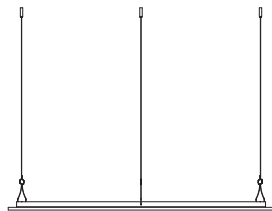




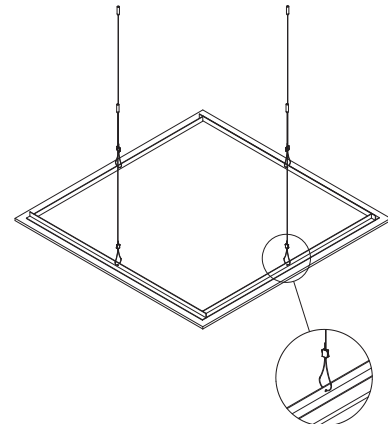
HORIZONTAL PANEL SUPPORT SYSTEM – 4' X 4'



TOP VIEW

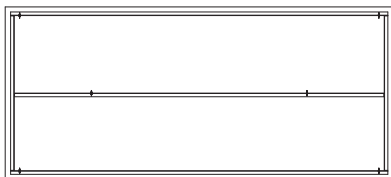


SIDE VIEW

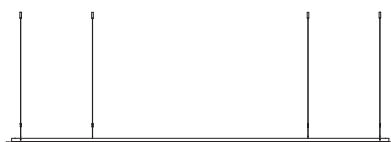


STANDARD LOOP
FITTING INTO HOLES
LOCATED ON ANGLE
(4 PER SYSTEM)

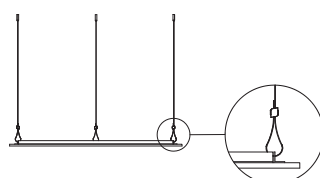
HORIZONTAL PANEL SUPPORT SYSTEM – 4' X 9'



TOP VIEW

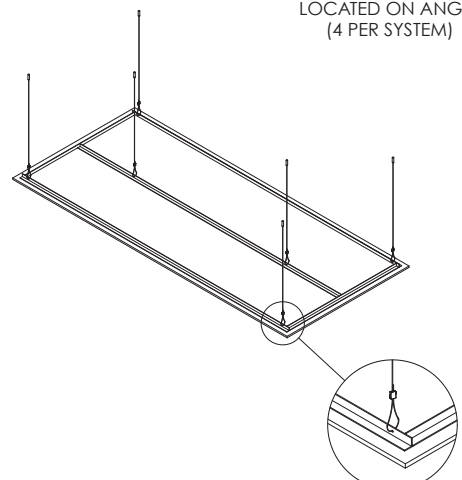


SIDE VIEW



END VIEW

ANGLE OFFSET FROM
EDGE ON ALL SIDES



STANDARD LOOP
FITTING INTO HOLES
LOCATED ON ANGLE
(6 PER SYSTEM)

ZINTRA® ACOUSTIC HORIZONTAL PANEL SUPPORT SYSTEM SPECIFICATIONS

CONTENT	100% Polyester
ACOUSTIC RATING	0.90 NRC for ½", 0.95 for 1"
PANEL OPTIONS	Zindra panel only or Zindra Pattern on Zindra (see page 24 - 25 for design options)
SIZE OPTIONS	4' x 4' / 1220mm x 1220mm and 4' x 9' / 1220mm x 2745mm
COLOR	16 standard colors. (See page 2)
PACKAGE INCLUDES	Zindra with aluminum L angle fixed to panel back. Complete hanging hardware including 5' / 1525mm of aircraft wire and adjustable fasteners. Other lengths of aircraft wire are available for an additional charge.
HARDWARE COLORS	Black only
INSTALLATION	Fix hardware (supplied) to ceiling, feed wire through aluminum support and adjust height accordingly. See MDCWALL.COM/Zindra for complete installation instructions.
FIRE RATING	In accordance with ASTM-E84, Zindra® Acoustic ½" achieves a Class A Fire Rating.
CARE INSTRUCTIONS	Vacuum to remove dust Remove spills immediately using a clean damp cloth or with soap and water. Carpet and fabric cleaners can be used – always test an inconspicuous area first.

A photograph showing a large-scale installation of ZINTRA acoustic blades. The blades are dark-colored, rectangular panels mounted on a light-colored wall. They are arranged in a staggered, overlapping pattern, creating a textured, three-dimensional effect. The installation is set in a modern interior space with a wooden floor and a blue ceiling. The text 'ZINTRA® ACOUSTIC BLADES' is overlaid on the image in a large, bold, white font.

ZINTRA® ACOUSTIC BLADES

ZINTRA[®] ACOUSTIC BLADES

WHAT ARE ZINTRA[®] ACOUSTIC BLADES?

Zintrac[®] Acoustic Blades are a range of pre-fabricated, wall mounted systems that showcase Zintrac's unique, rigid, yet flexible characteristics. Combining aesthetic appeal and acoustic performance, these systems are supplied ready to install with minimal fuss. The increased surface area of the vertical blades presented to the room results in a greater absorption of sound compared to flat panels.

ZINTRA[®] BLADES FEATURES

- Easy to install with supplied hardware
- NRC = 0.90
- Customizable height and width
- Ability to mix and match blade color and shape
- Create custom designs and shapes
- Flat packed for cost effective transport

STANDARD BLADE CONFIGURATIONS (2 BLADE SETS SHOWN):



BLADES BOLT



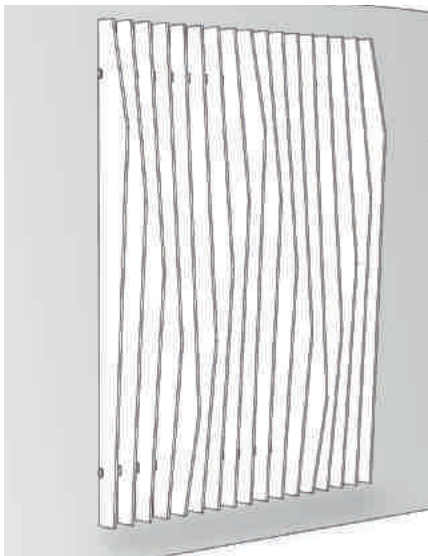
BLADES RIDGE



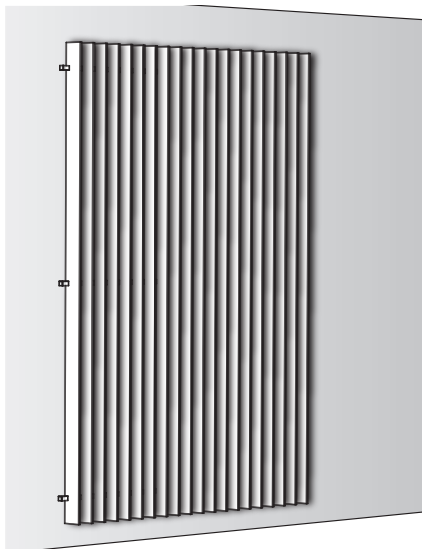
BLADES CANYON



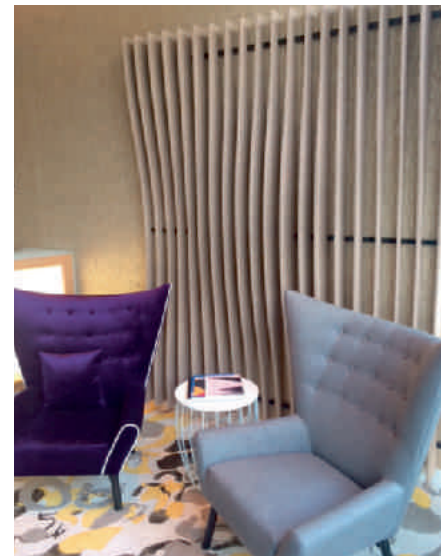
BLADES SWELL



BLADES STANDARD

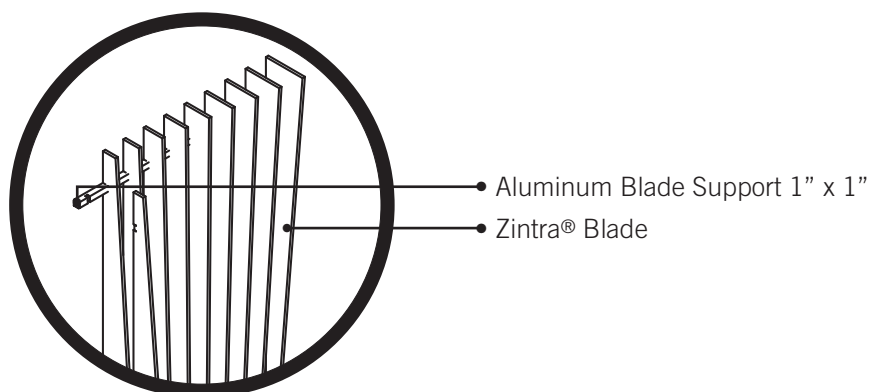


BLADES SQUARE



ZINTRA® ACOUSTIC BLADES SPECIFICATIONS

CONTENT	100% Polyester
ACOUSTIC RATING	0.90 NRC
COLOR	16 standard colors. (See page 2)
STANDARD SIZE	40"w x 9'h / 1220mm x 2745mm or 40"w x 4'6"h / 1220mm x 1375mm
PACKAGE INCLUDES	Pre-fabricated aluminum frame - 3 each for 9' high, 2 each for 4'6" high. Pre-cut Zintra® Acoustic ½" Blades. End-caps and screws.
HARDWARE COLORS	Frame - Clear Satin Aluminum or Black. End-caps - Black or White
BLADE THICKNESS	½" / 12mm
INSTALLATION	Fix aluminum supports to the substrate parallel to each other at appropriate heights. Insert notched Zintra Blades. See MDCWALL.COM/Zintra for complete installation instructions.
FIRE RATING	In accordance with ASTM-E84, Zintra® Acoustic ½" achieves a Class A Fire Rating.
CARE INSTRUCTIONS	Vacuum to remove dust Remove spills immediately using a clean damp cloth or with soap and water. Carpet and fabric cleaners can be used – always test an inconspicuous area first. Stain repellant coating available for additional protection.



ZINTRA[®] ACOUSTIC CONCERTINA

ZINTRA® ACOUSTIC CONCERTINA

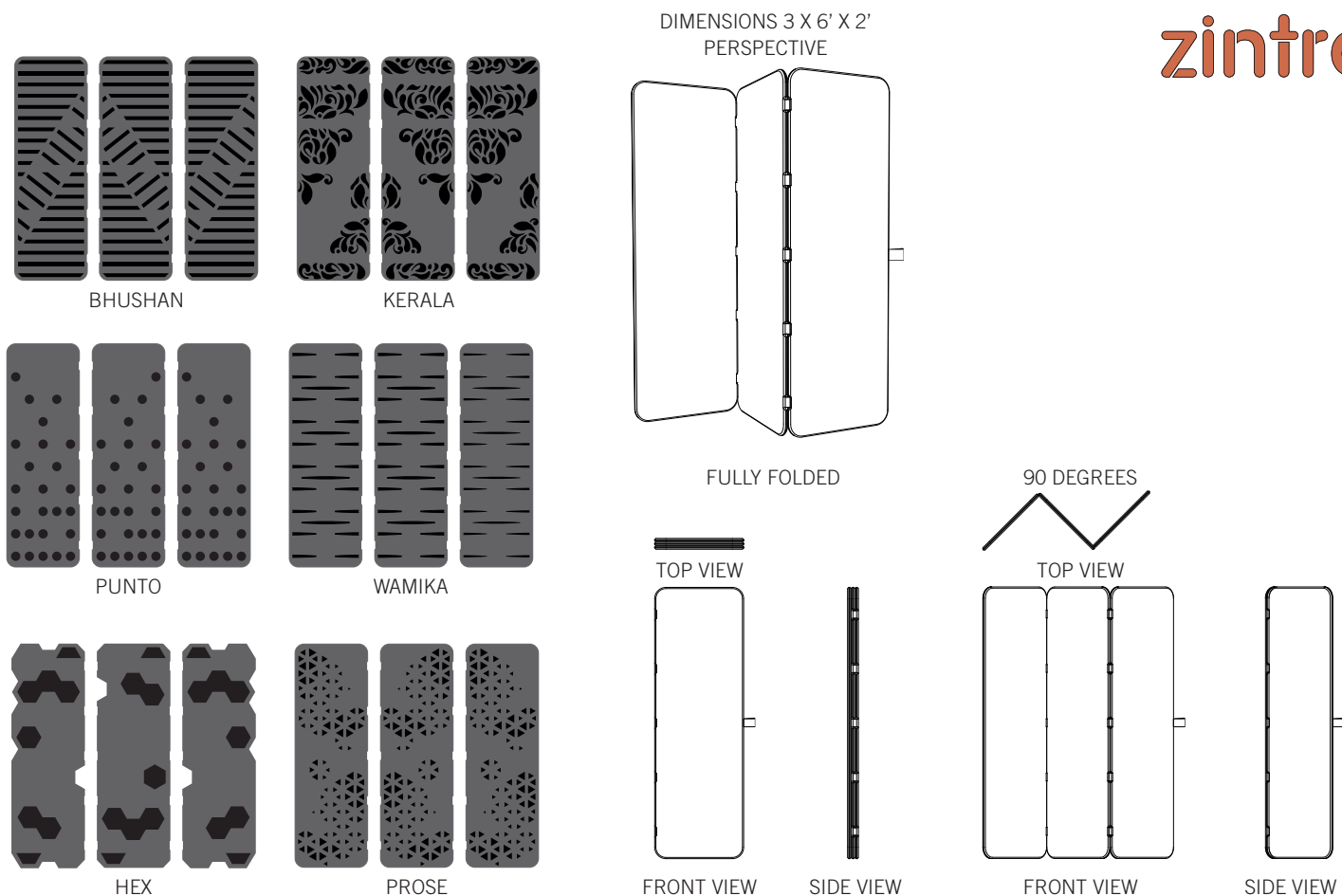
WHAT ARE ZINTRA® ACOUSTIC CONCERTINA?

Concertina screens are a new way to take full advantage of MDC's Zintra® ½" Acoustic Panels. Zintra® Concertina utilizes plain or Zintra on Zintra® panels connected with flexible straps to form a lightweight, portable partition solution and is also available with a stand. No assembly is required, just stand it up and adjust the angles to suit. When it's no longer needed simply fold flat and store away.

ZINTRA® CONCERTINA FEATURES

- NRC = 0.95 - 1.0 depending on positioning
- No assembly required
- Tone-on-tone or two tone color combinations





ZINTRAC[®] ACOUSTIC CONCERTINA SPECIFICATIONS

CONTENT	100% Polyester
ACOUSTIC RATING	0.95 NRC
THICKNESS	1" / 24mm
SIZE	3 panels of 2' wide x 6' high connected together
SURFACE FINISH	Matte
WEIGHT	1 lb / f ² / 4.8 kg / m ²
COLORS	16 standard colors. (See page 2)
APPLICATION	Indoor areas only.
FIRE RATING	In accordance with ASTM-E84, Zintrac [®] Acoustic 1/2" and Zintrac Pattern on Zintrac achieves a Class A Fire Rating.
CARE INSTRUCTIONS	Vacuum to remove dust. Remove spills immediately using a clean damp cloth or with soap and water. Carpet and fabric cleaners can be used – always test an inconspicuous area first. Stain repellent coating available for additional protection.
OPTIONAL EXTRA	Steel fixing plate to fix it in place – available in White

ZINTRA[®] DESK SOLUTIONS

ZINTRAC[®] DESK SOLUTIONS

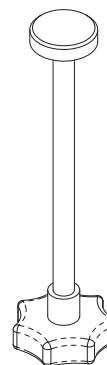
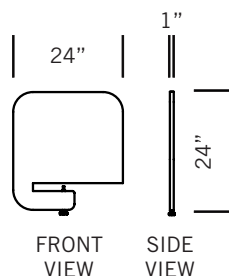
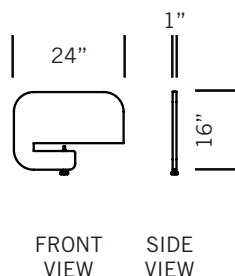
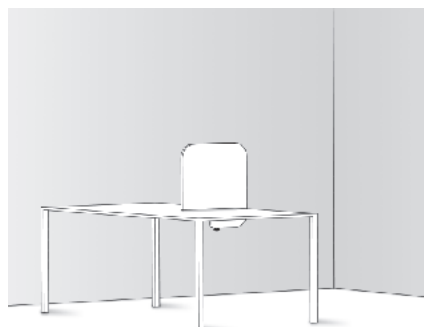
WHAT ARE ZINTRAC[®] DESK SOLUTIONS?

Zintrac[®] Desk Solutions grant privacy with minimal impact to the overall 'openness' of a design. The three products; Desk Divider, Desk Modesty Panel and Desk Screen are crafted from Zintrac[®] Acoustic ½" Panels providing acoustic and aesthetic appeal in a range of colors and designs. They are available in a variety of versatile sizes and configurations to allow easy tailoring to your specific environment needs. They accommodate all desk thicknesses from 3/8" – 1 ½" and can be temporarily or permanently fixed depending upon the individual needs of the project.

ZINTRAC[®] DESK SOLUTIONS FEATURES

- NRC = 0.95 - 1.0 depending on positioning
- Easy to assemble
- Tone-on-tone or two tone color combinations
- Tackable
- Accommodates most desk thicknesses

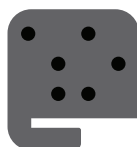




BHUSHAN



KERALA



PUNTO



WAMIKA



HEX

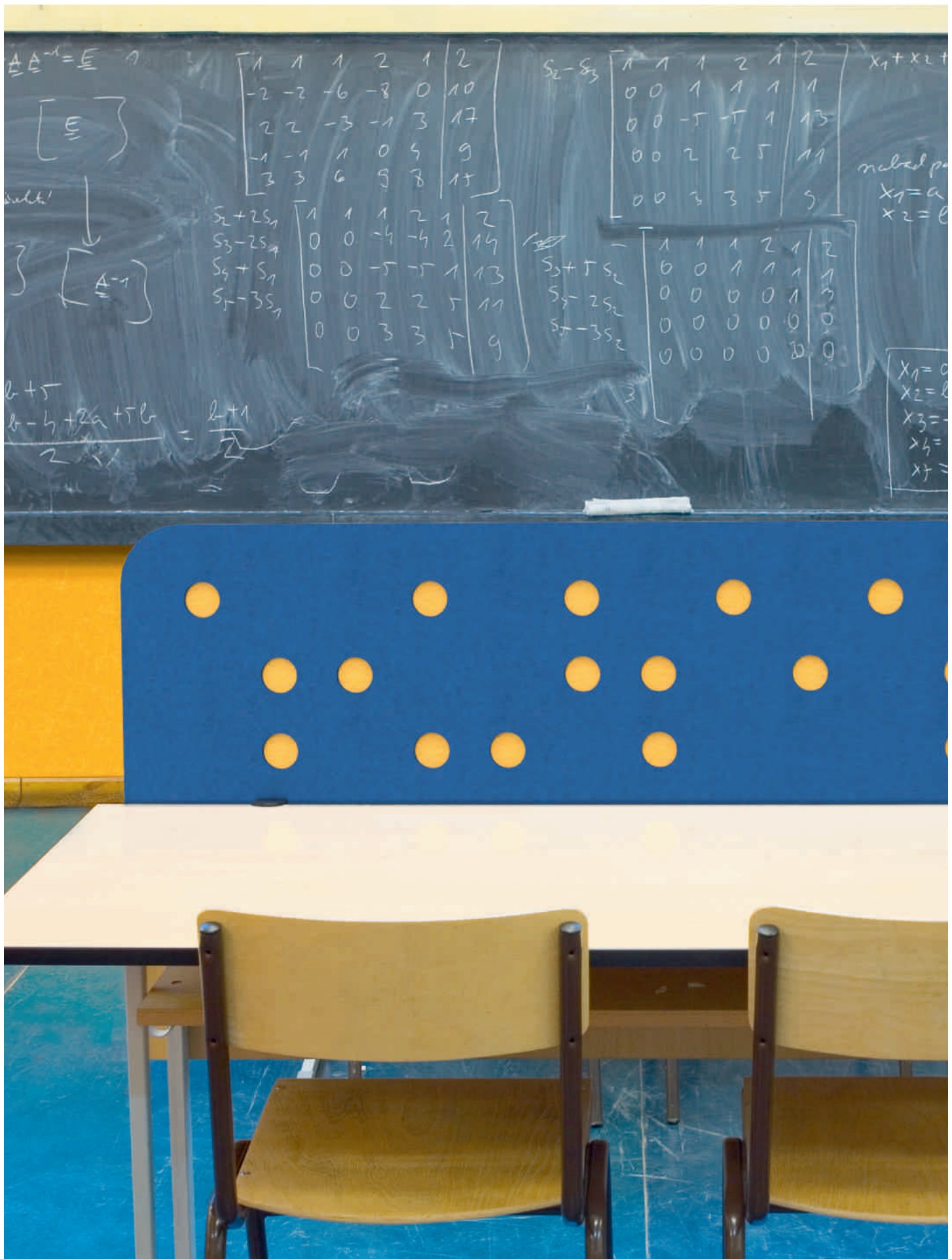


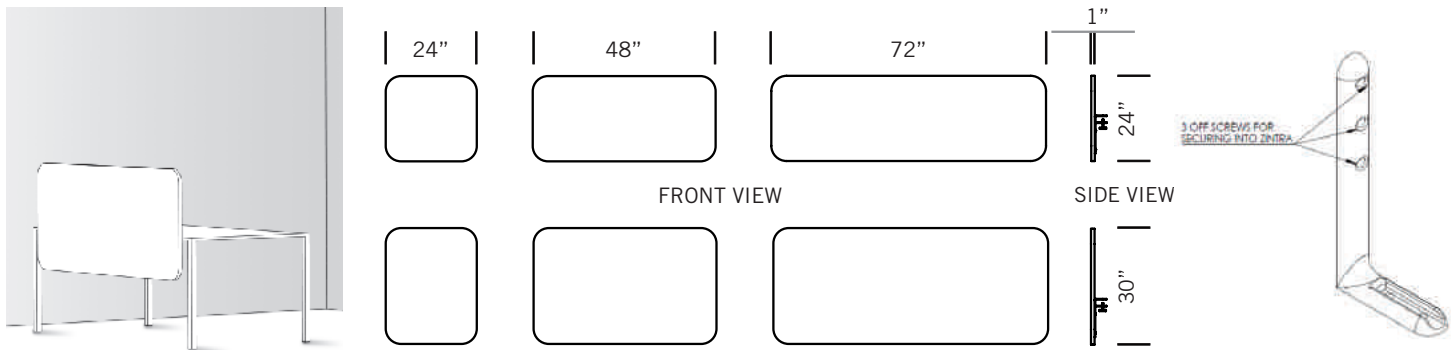
PROSE

* Plain version also available

ZINTRā® DESK DIVIDER SPECIFICATIONS

CONTENT	100% Polyester
ACOUSTIC RATING	0.95 NRC
THICKNESS	1" / 24mm
PANEL HEIGHT FROM TOP OF DESK	11" / 280mm or 19" / 482mm
SURFACE FINISH	Matte
WEIGHT	1 lb / ft ² / 4.8 kg / m ²
COLORS	16 standard colors. (See page 2)
APPLICATION	Indoor areas only.
FIRE RATING	In accordance with ASTM-E84, Zintrā® Acoustic 1/2" and Zintrā Pattern on Zintrā achieves a Class A Fire Rating.
CARE INSTRUCTIONS	Vacuum to remove dust Remove spills immediately using a clean damp cloth or with soap and water. Carpet and fabric cleaners can be used – always test an inconspicuous area first. Stain repellant coating available for additional protection.

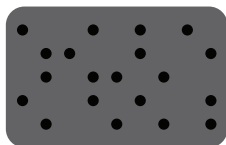




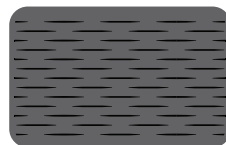
BHUSHAN



KERALA



PUNTO



WAMIKA



HEX



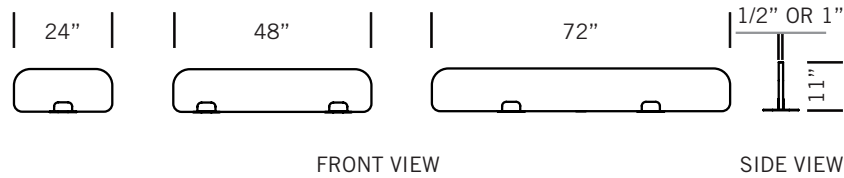
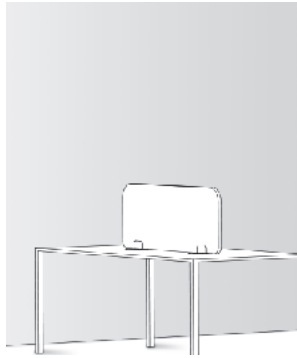
PROSE

* Plain version also available

ZINTRAC[®] DESK MODESTY SPECIFICATIONS

CONTENT	100% Polyester
ACOUSTIC RATING	0.95 NRC
THICKNESS	1" / 24mm
SIZE	Height from desk surface - 11" / 280mm Length - 24" / 610mm (2 brackets), 48" / 1195mm (3 brackets) or 72" / 1778mm (4 brackets)
SURFACE FINISH	Matte
WEIGHT	1 lb / ft ² / 4.8 kg / m ²
COLORS	16 standard colors. (See page 2)
HARDWARE COLOR	White only
APPLICATION	Indoor areas only.
FIRE RATING	In accordance with ASTM-E84, Zintrac [®] Acoustic 1/2" and Zintrac Pattern on Zintrac achieves a Class A Fire Rating.
CARE INSTRUCTIONS	Vacuum to remove dust Remove spills immediately using a clean damp cloth or with soap and water. Carpet and fabric cleaners can be used – always test an inconspicuous area first. Stain repellent coating available for additional protection.





BHUSHAN



KERALA



PUNTO



WAMIKA



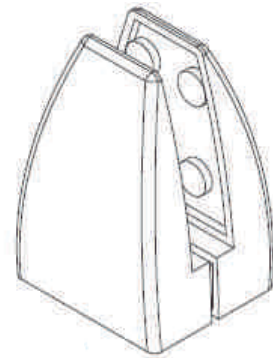
HEX



PROSE

* Plain version also available

ZINTRA® DESK SCREEN SPECIFICATIONS



PERSPECTIVE VIEW

CONTENT	100% Polyester
ACOUSTIC RATING	0.95 NRC
THICKNESS	1" / 24mm
SIZE	Length - 24" / 610mm (1 bracket), 48" / 1195mm (2 brackets) or 72" / 1830mm (3 brackets) Height - 11" / 280mm
WEIGHT	1" thick - 1 lb / ft ² / 4.8 kg / m ²
COLORS	16 standard colors. (See page 2)
HARDWARE COLOR	White only
INSTALLATION	Wedge Zintra Acoustic into the stand/s supplied then: If Loose - place directly onto desk surface If Fixed - screw through stand base into substrate with suitable screws
APPLICATION	Indoor areas only.
FIRE RATING	In accordance with ASTM-E84, Zintra® Acoustic 1/2" and Zintra Pattern on Zintra achieves a Class A Fire Rating.
CARE INSTRUCTIONS	Vacuum to remove dust Remove spills immediately using a clean damp cloth or with soap and water. Carpet and fabric cleaners can be used – always test an inconspicuous area first. Stain repellant coating available for additional protection.